

# KeyColor C Ink Desk

## Hi Tech in a user friendly package

### HIGHLIGHTS:

#### AutoSet Software:

Preset ink keys from image setter, CTP system or plate scanner.

#### AutoKey Software:

Interface with color measurement systems to enable closed-loop color control

#### Works with multiple presses:

KeyColor C can be networked to central service for quick access to presses. Control any fountain from any desk.

#### Touch Screen:

Clear display of key setting and job information.

#### SmartFountains:

Driven concurrently for immediate response to input on ink desk.



Designed as a lower cost alternative to the **KeyColor III**, the **KeyColor C** quickly became the standard Ink Desk for most applications.

Advanced electronics and **AutoSet** software provide the ability to accurately preset the ink keys from an image setter, CTP system, or Plate Scanner.

**AutoKey** software is the interface with color measurement systems that enables closed-loop color control for web or sheet-fed applications.

Featuring a menu driven, MS Windows™ style operator display on a large TouchScreen, the **KeyColor C** is easy to learn and easy to use.

All **KeyColor C** functions are quickly accessed through drop down menus on the display screen. The TouchScreen displays Ink key positions and current job information for the selected **SmartFountain**.

Key settings can be quickly adjusted from the key zone rocker switches or by using the TouchScreen. Simply touching the

desired fountain icon on the screen rapidly selects the next fountain for adjustment.

All **SmartFountains** on the press are driven concurrently to provide rapid presetting and job recall. Individual ink keys are adjusted as rapidly as the operator inputs changes at the ink desk.

In shops with multiple presses, **KeyColor C** Ink Desks can be networked to a central server allowing any job to be recalled to any similar press.

The use of multiple **KeyColor C** Ink Desks on multi-web presses enables several operators to set color simultaneously during make-ready. Networking of the Ink Desks allows any fountain to be controlled from any desk, providing your operators maximum flexibility. If desired, a single desk can then be used to maintain color through the balance of the run.

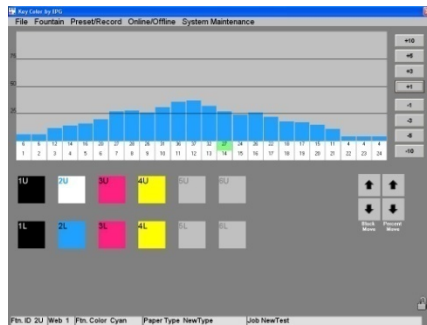
**KeyColor C** systems can store thousands of jobs on the internal hard drive, ready for rapid make-ready of repeat work.

**KeyColor C** is housed in an industrial grade console. Advanced engineering permits **KeyColor C** to be configured to meet your specific requirements, yet the simplicity of design assures rapid installation. In most cases, installation can be made during normal press downtime. With modular design maintenance is easy, and the included modem capability allows on-line support.

# KeyColor C Ink Desk

## Hi Tech in a user friendly package

### Operation



When a fountain icon is touched, the display instantly displays the current settings for the keys on that fountain. Keys can be adjusted from either the key zone rocker switches or by selecting and adjusting keys directly on the TouchScreen.

If ink ball and/or water controls are installed, the screen will display the current settings for the selected fountain. Adjustments can be made using the rocker switches on the ink desk or from the TouchScreen.

The **KeyColor TouchScreen** provides the press operator with a clear display of key settings and job information. The screen layout is customized to reflect the layout of each press and any additional controls, such as ink ball and water that are installed. System functions are accessed through familiar MS Windows style drop-down menus.

For larger applications, especially those on presses printing newspapers, **AutoPage** page-based software is available. **AutoPage** is a user-friendly interface that displays job pagination and allows the operator to select fountains by page to adjust color.

### SmartFountains

All **KeyColor** Ink Control Systems incorporate **Smart Fountains** with digital control from a high-speed industrial computer. The **SmartFountain** actuator array is gasket-sealed in a rugged steel housing and can be rapidly mounted on an existing press, without machining, usually during normal press downtime. The "Smart Fountain" can be used with solid or segmented blades, as well as sliding blocks.

The "Smart Fountain" houses the electronics which provide the digital interface from the console to the individual actuators. All **SmartFountains** on the press are driven concurrently so that all ink keys are driven as soon as moves are



input to the ink desk. The actuator is a 12 VDC motor driven unit rated at five lb-in. The precision potentiometric control in the multiplex circuit maintains accurate actuator positioning.

The **KeyColor** design with unique manual over-ride also allows adjustment of an ink key to be made quickly and easily at the fountain without loss of calibration.

All **KeyColor** Systems carry a three-year parts warranty.

#### SERVICES AVAILABLE

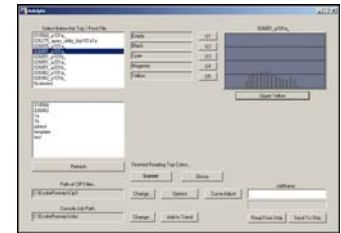
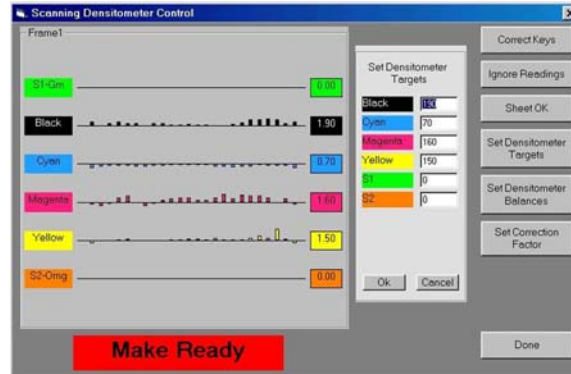
- Technical Support
- Installation and Setup
- Maintenance
- Application Support
- Hardware Support
- Guaranteed Warranty



610 Whitetail Boulevard  
River Falls, WI 54022  
Phone 715.425.1900  
Fax 715.425.1901  
info@nela-usa.com  
www.nela-usa.com

# KeyColor Adelphi AutoKey

## Closed Loop for better quality



### SERVICES AVAILABLE

- Technical Support
- Installation and Setup
- Maintenance
- Application Support
- Hardware Support
- Guaranteed Warranty

Closed-loop color control, the continuous monitoring, correction, and transmission of color values, enables efficient, consistent printing. For over a decade, **EPG** has provided customers who use an **EPG** Remote Ink Control System with the ability to achieve automatic closed-loop color-control with other manufacturers' color measurement equipment.

Today, **EPG** Adelphi technology offers customers the freedom to "close the loop" with other manufacturers' ink control systems.

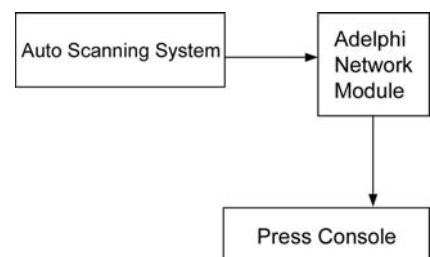
Our KeyColor Adelphi AutoKey System consists of an Adelphi Network Module and an Adelphi software package. The Adelphi Network Module is a custom design that enables ANY scanning system to be directly networked to the ink desk. Our custom system reads the current ink key settings from the press console, compares it to the current scan and sends the ink key readings to the console for correction as necessary.

As each new color-bar scan is performed, AutoKey continues to improve the key settings in real time. This continues without manual operator adjustments during the complete run of

the job and enables automatic adjustment of the ink keys to maintain color quality throughout the press run.

Adelphi AutoKey is also compatible with **EPG's** own Apollo color measurement and web inspection technology. Ink keys are accurately adjusted to achieve and maintain required target densities. Typically, target densities are pre-established customer values or over-ride values derived from an OK sheet. Corrections to ink key settings due to out-of-tolerance readings occur after each scan, maintaining color settings throughout the print run. Today printers can create a total printing system that delivers reliable, state-of-the-art continuous closed-loop color-control by combining any or all of the **EPG** family of products.

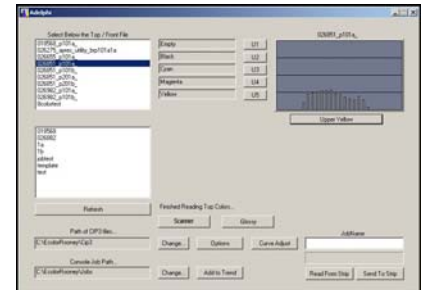
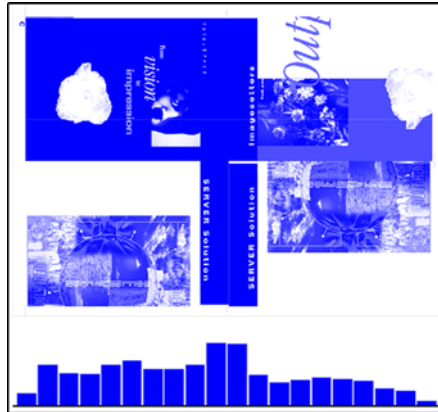
Barriers to efficient, consistent print jobs have been eliminated.



610 Whitetail Boulevard  
River Falls, WI 54022  
Phone 715.425.1900  
Fax 715.425.1901  
info@nela-usa.com  
www.nela-usa.com

# KeyColor Adelphi AutoSet

## Automatic Ink Key Presetting



### SERVICES AVAILABLE

- Technical Support
- Installation and Setup
- Maintenance
- Application Support
- Hardware Support
- Guaranteed Warranty

For over a decade **EPG's** KeyColor AutoSet application has been accurately presetting ink fountain keys from digital files. KeyColor Remote Ink Control System helps printers speed makeready time and reduce waste.

New KeyColor Adelphi AutoSet utilizes CTP output to preset ink fountain keys on other manufacturers' ink control systems. Any ink desk on any press can now be supported with KeyColor Adelphi presetting technology to help printers reduce setup costs.

Our Adelphi AutoSet consists of a Network Module and software package. The Adelphi Network Module is a custom design that be directly networked to any ink desk to preset ink keys. Adelphi converts digital files to ink zone coverage and sends that information to the ink desk over a network connection or diskette.

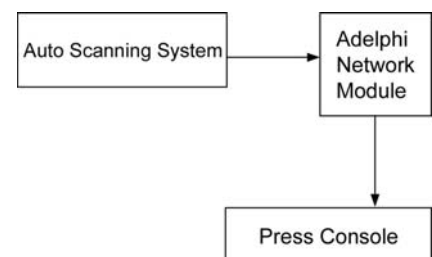
Precise preset values enable significant savings in makeready time. In addition, printers can anticipate reductions in paper waste. Those time and material savings contribute to a prompt return on the investment and present more opportunities to grow business.

The press operator selects each job to be preset from the list of available jobs shown on the Ink Desk monitor. Adelphi's automatic presetting allows operators to simultaneously preset all ink keys and route that data from the Ink Desk to the proper ink fountain. Adelphi software supports user-defined paper types.

Today, printers can combine any or all of the **EPG** family of products to create a total printing system that delivers reliable color control. With our Keycolor Remote Ink Control System, KeyColor Apollo color measurement technology, KeyColor Adelphi presetting software, or KeyColor Adelphi AutoKey Scanner Interface, barriers to efficient, consistent print jobs have been eliminated.



610 Whitetail Boulevard  
 River Falls, WI 54022  
 Phone 715.425.1900  
 Fax 715.425.1901  
 info@nela-usa.com  
 www.nela-usa.com



# KeyColor AutoPage

## SERVICES AVAILABLE

Technical Support  
Installation and Setup  
Maintenance  
Application Support  
Hardware Support  
Guaranteed Warranty



610 Whitetail Boulevard  
River Falls, WI 54022  
Phone 715.425.1900  
Fax 715.425.1901  
info@nela-usa.com  
www.nela-usa.com



**KeyColor AutoPage** is designed to greatly simplify the process of setup and color correction for newspaper and book printers. Operators no longer need to remember the location of each page on the press. With AutoPage, the page locations are displayed on the operator screen. The operators need only to touch the page number and the color that they wish to adjust and the system will instantly access the corresponding fountain. **AutoPage** also allows multiple jobs to be run simultaneously on different sections of the press, with the operators able to select any page from any job for adjustment.

**AutoPage** is customized to reflect your specific press layout. The number of units, tower or inline, fountains per unit, and location of folders are all represented graphically on the setup display. AutoPage job setup is done by the press operator at the ink desk. Job formats that are used repeatedly can be saved and recalled. The system guides the user through the simple steps required to define a job.

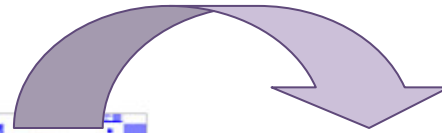
Once a job is configured **AutoPage** automatically calculates and displays the location of each page on the press. Where multiple operator consoles are desired, this information is available to all consoles. **AutoPage** handles Broadpage, Tabloid, and Quarter Fold formats as well as  $\frac{1}{2}$  and  $\frac{3}{4}$  webs and can be configured for direct print units.

When there is more than one page on the plate, **AutoPage** will highlight the portion of the ink key array that spans the page being addressed. In addition to access by page number, the operator can step through the pages sequentially using the "Next Page" and "Previous Page" functions. If desired, additional features can be added to provide a page based control of registration, ink ratchet, and water.

As on all **KeyColor** systems, **AutoSet** presetting software can be added to help further reduce your make-ready time and waste. **AutoSet** software will analyze digital data from a plate scanner, image setter, or CTP system and automatically preset the fountain keys on each **SmartFountain**. Adjustments made to ink keys are automatically captured, compared to preset values, and used to continually improve preset accuracy.

# KeyColor AutoSet

## Automatic Ink Key Presetting



### SERVICES AVAILABLE

- Technical Support
- Installation and Setup
- Maintenance
- Application Support
- Hardware Support
- Guaranteed Warranty

KeyColor AutoSet software, used in conjunction with the KeyColor Remote Ink Control System, enables printers to achieve dramatic reductions in both make-ready time and waste by accurately presetting all ink fountain keys. Make-ready savings of 30-50% in time and waste impressions are typical. AutoSet can utilize digital plate image files such as CIP3/4, BMP, JPG, or TIFF. AutoSet will accept full plate images or provide imposition of individual pages to determine full plate coverage.

AutoSet can be configured to automatically process files from the CTP or Image Setter work flow and transfer the presetting data to the Ink Desk.

The press operator selects the job to be preset from the list of available jobs shown on the Ink Desk monitor. The KeyColor system then simultaneously presets all ink keys to the proper settings.

The job file format used in the standard version of AutoSet contains information designating the color for each plate, and web number and side if required. KeyColor uses this information to route preset data to the proper fountain.

Installations using AutoPage will require only page number and color in order to properly route the preset data.

The KeyColor System automatically monitors any difference between preset and "OK sheet" settings and uses that information to continually learn and improve preset accuracy.

The Ink Desk software also supports unlimited, user defined paper types. The KeyColor Ink Desk will learn to accurately preset the ink keys for each fountain and paper type combination.

In multi-press installations AutoSet can be configured to allow preset files to be run on any similar press. Conversion to key position will reflect the characteristics of each particular press and fountain.

There is no single configuration of presetting that fits all applications. We recommend contacting our engineering staff to discuss your application.



610 Whitetail Boulevard  
River Falls, WI 54022  
Phone 715.425.1900  
Fax 715.425.1901  
info@nela-usa.com  
www.nela-usa.com